

TECHNOLOGIES

IMPORTER & SUPPLIER OF INKJET PRINTERS,
LASER ENGRAVER & CNC ROUTERS

www.uvprintingmachines.in 

www.flexmachines.in 

- FLEX BANNER PRINTER
- ECO SOLVENT PRINTER
- UV FLATBED PRINTER
- UV ROLL TO ROLL PRINTER
- UV HYBRID PRINTER
- CNC ROUTER
- LASER ENGRAVER
- LASER MARKER
- 3D RESIN PRINTER



CSJ 0408 1024i-4/8 Heads



CSJ 0408 1024i-4/8 heads Technical Parameter

www.uvprintingmachines.in

www.flexmachines.in

Model	CSJ 0408(1024i-30PL)	CSJ 0408(1024i-30PL)				
Printing Technology	Konica KM-512i Printheads					
Printheads	4	8				
Print width	126inch					
Speed & Resolution (Sqft/hr)	Resolution	Passes	Speed	Resolution	Passes	Speed
	480x360 dpi	1 Pass	2400	480x360 dpi	1 Pass	4800
	480x540 dpi	2 Pass	1200	480x720 dpi	2 Pass	2400
	480x720 dpi	3 Pass	900	360x1080 dpi	3Pass	1800
Parts Used	BYHX-A / UMC-8Heads Board PANASONIC 400W AC Servo Motor Honsoft Ultraprint RIP Software Germany IGUS Power cable JYY DC ink Pump JYY Solenoid Valve		BYHX-A-8Heads Board PANASONIC 400W AC Servo Motor Honsoft Ultraprint RIP Software Germany IGUS Power cable JYY DC ink Pump JYY Solenoid Valve			
Others Features	Adjustable vacumm for Printing Bed Rear-bed-front-Printhead heater Infrared Heater LED Lights at cleaning position- and printing bed Lift type Carriage Unique Printhead protection stack		Adjustable vacumm for Printing Bed Rear-bed-front-Printhead heater Infrared Heater LED Lights at cleaning position- and printing bed Lift type Carriage Unique Printhead protection stack			

*Specifications, Model, color mentioned Subject to change without notice.

C8 1024i/512i -4/8 Heads



Technical Parameter

Model	C8 (512i-30PL)			C8 (1024i-30PL)		
Printing Technology	Konica KM-512i Printheads			Konica KM-1024i Printheads		
Printheads	4			8		
Print width	126inch			126inch		
Speed & Resolution (Sqft/hr)	Resolution	Passes	Speed	Resolution	Passes	Speed
	480x360 dpi	1 Pass	2400	480x360 dpi	1 Pass	4800
	480x540 dpi	2 Pass	1200	480x720 dpi	2 Pass	2400
	480x720 dpi	3 Pass	900	360x1080 dpi	3Pass	1800
Parts Used	BYHX-A / UMC-8Heads Board PANASONIC 400W AC Servo Motor Honsoft Ultraprint RIP Software Germany IGUS Power cable JYY DC ink Pump JYY Solenoid Valve			BYHX-A-8Heads Board PANASONIC 400W AC Servo Motor Honsoft Ultraprint RIP Software Germany IGUS Power cable JYY DC ink Pump JYY Solenoid Valve		
Others Features	Adjustable vacuum for Printing Bed Rear-bed-front-Printhead heater Infrared Heater LED Lights at cleaning position- and printing bed Lift type Carriage Unique Printhead protection stack			Adjustable vacuum for Printing Bed Rear-bed-front-Printhead heater Infrared Heater LED Lights at cleaning position- and printing bed Lift type Carriage Unique Printhead protection stack		

*Specifications, Model, color mentioned Subject to change without notice.

JOVI TECHNOLOGIES

www.uvprintingmachines.in 
www.flexmachines.in 

80%* BANK LOAN AVAILABLE * GSTIN Mandatory (or) 3 years IT Return

FREE Installation & Training



JT-1832i ECO SOLVENT PRINTER 6 FEET SINGLE HEAD EPSON i3200E

JOVI TECHNOLOGIES

www.uvprintingmachines.in 
www.flexmachines.in 

JT-1832i ECO SOLVENT PRINTER 6 FEET SINGLE HEAD

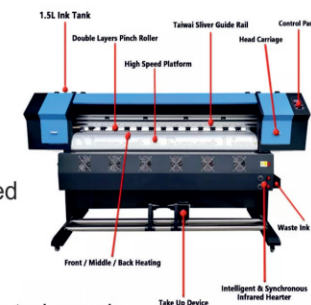
Rprint head	JT i3200E
Number of printhead(PC)	1
Maximum print width	1800mm
Color	CMYK 4color
Compatible ink	Eco-solvent ink
Eco-solvent	Self-adhesive vinyl/Flex/One way vision/Coated banner/Flag cloth
Special	Wallpaper/Canvas/Chinese art paper/Mesh
Printing resolution(dpi)	3200 dpi
Cleaning of printhead	Automatic
Heating system	Front/Back
Auto media take-up system	Equipped
Platform suction control	Equipped
Interface	USB
Working environment	15-30
Relative humidity(%)	40-60
RIP software	Maintop 5.3
Operation system	Win7
Voltage	AC220V/110V 50-60HZ
Power(W)	700
Fan	Equipped

Functions:

Advanced software functions of the wide format inkjet printing machine.

high-efficient printing
rip while printing;
print selected area;
skip white in X and Y printing directions;
printing quality enhanced
two feather printing modes: moist, gradient;
simple printhead calibration mode can be easily mastered by operators; micro adjustment of print head voltage.

1. human-based functions
2. adjustable step value during printing;
3. operations both in computer interface and machine control panel;
4. automatic and constant ink system cleaning function



80%* BANK LOAN AVAILABLE * GSTIN Mandatory (or) 3 years IT Return

FREE Installation & Training

JT UV ROLL TO ROLL

EPSON i3200 E-1 Print Head



MODEL NO.	JT i3200-E1
PRINT HEAD	EPSON i3200-E1
COLOR	CMYK
PRINTING WIDTH	1.9 METER
INK TYPE	ECO SOLVENT / SUBLIMATION INK / WATER BASED INK
PRINTING SPEED	4PASS:- 200 sqft/h
	6PASS:- 150 sqft/h
	8PASS:- 110 sqft/h
DATA TRANSFER	LAN INTERFACE
RIP SOFTWARE	MAINTOP 5.3/ (ORIGINAL MAINTOP EXTRA CHARGE 6.0)
POWER	, MAXIMUM POWER:- 1800W
OPERATING SYSTEM	, WIN 7 , WIN 8
HEATING SYSTEM	FRONT AND BACK-SIDE HEATING SYSTEM
MACHINE SIZE	114"29"25" inch



UV chiller



UV Lamp



Epson i3200
Printhead

JT UV i3200

ROLL TO ROLL PRINTER



JT UV XP600 ROLL TO ROLL PRINTER

Print head	Using Epson Print head, including 180 nozzles/row*6*lines*2, high quality up to 1440dpi
Print resolution/speed	4pass:30m2/ /hour
	6pass:20m2/hour
	8pass:15m2 /hour
Ink	Sort ECO-DYE-UV-RZR
	Capacity Water Based Ink/ Eco Solvent Ink, Water Based ink; dye ink, Sublimation ink
	6 Colors:1.5L*6/color
Media	Maximum Width 1850mm
	Thickness 1.5mm to 8mm adjustable
	Max Roll Weight 85KG
Sort	PP Sythetic paper, vinyl sheet, film, coated paper, Acid Proof paper banner, canvas etc., Adhesive Vinly sheet, Banner and so on.

High Printing quality	Three intelligent eclosion print function;VSD technology
Media Heater	Pre/Post Heater (Can be controlled separately)
Media Take-up Device	Strong Rolling take-up device with the automatic damper
Drying System	Drying system(option)
Interface	Network port
RIP Software	Maintop V5.3 5.5, Photoprint, Topaz, Seeget Wasatch
Powder	AC110V+/- 10%、AC220V+/-10%、50/60+/HZ
Operation Environments	Temperature:20°C-35°C, Humidity:35%RH-65%RH
Machine Size	L 2500 x W 750 x H 1500mm
Height of Worktable	1050mm

Functions

Advanced software functions of the wide format inkjet printing machine.

- (1)high-efficient printing
 1. rip while printing;
 - 2.print selected area;
 - 3.skip white in X and Y printing directions;
 - 4.auto media sensor for setting print origin automatically(3 picture positions: eft, middle and right).
- (2)printing quality enhanced
 1. two feather printing modes: moist, gradient;
 - 2.simple printhead calibration mode can be easily mastered by operators;
 - 3.micro adjustment of print head voltage.
- (3)human-based functions
 1. options of automatically sensing or manually setting media origin;
 - 2.adjustable step value during printing;
 - 3.operations both in computer interface and machine control panel;
 - 4.automatic and constant ink system cleaning function.
- (4)ink saving function
 1. options for single head cleansing or double heads cleansing;
 - 2.options for light, medium and heavy print head sucking.

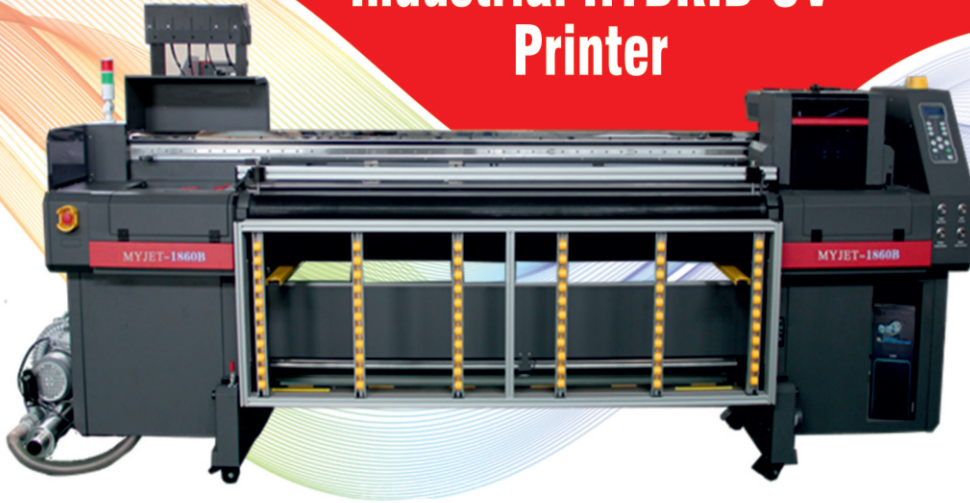
Samples pictures



80%* BANK LOAN AVAILABLE * GSTIN Mandatory (or) 3 years IT Return

FREE Installation & Training

Industrial HYBRID UV Printer



RICOH GEN5



Main Features:

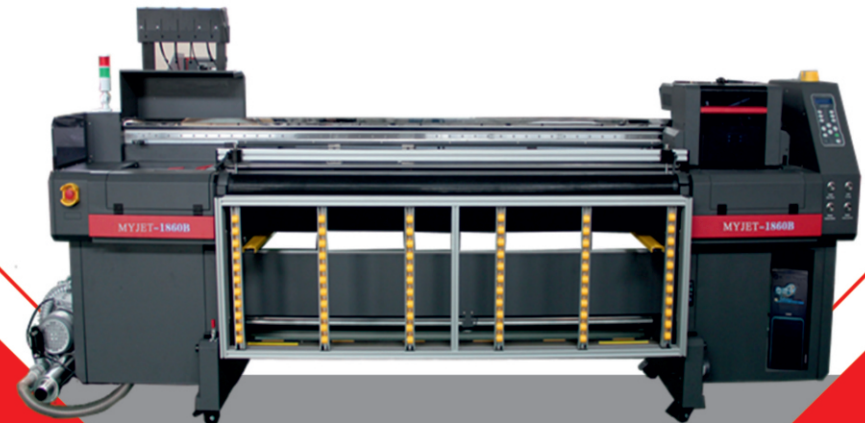
- Imported Print head for industrial production
- CMYK W V optional for high quality flatbed printing
- 2.5x1.3m vacuum table for large format sheet printing work
- Hard anodized vacuuming platform to avoid damaging the platform by rigid materials
- Auto height detection technology to detect print media thickness automatically optional
- Advanced printhead anti-crash system to avoid the risk of a collision between printer carriage and material optional

Specifications

Product Model	1860
Printhead Technology	Drop-on demand piezo electric
Printhead Control	Printhead voltage is software adjustable
Printhead Type	RICOH GEN5/GEN6
Printhead Number	2-8
Ink Characteristics	UV Curing Ink
Ink reservoirs	Refillable on the fly while printing/1000ml per color
Color Control	ICC based color, curves and density adjustment
Printhead Arrangement	C M Y K W v optional
Cleaning System	Positive Pressure Cleaning
Working Table	Vacuum Sucking
Sheet Printing Size	2500*1300mm
Print Interface	USB2.0

Media Thickness	0-100mm
Print Resolution	720*600dpi, 720*900dpi, 720*1200dpi
Printing Speed	10sqm/h-30sqm/h
Life of Printed Image	5 years(outdoor), 10years(indoor)
File Format	TIFF, JPEG, Postscript3, EPS, PDF etc.
RIP Software	Ripprint/ Photoprint optional
Power Supply	220V 50/60Hz(10%) >15A
Operation Environment	Temperature 20 to 28°C, Humidity 40% to 60%
Machine Dimension	4400*2100*1400mm
Weight	1500kg
Warranty	13 months exclude the consumables

Note: The above information is subject to change without prior notice



30CM UV DTF PRINTER



30CM UV DTF PRINTER

Product model	30cm
Nozzle model	Epson 1600
Number of nozzles	2
Printing speed	6 Pass:2.5 m ² /h
Print media	A Film, release paper
Ink type	UV ink
Color	CMYK+WWVV
Print interface	Gigabit Network Interface
Print wide	330 mm
UV Lamp Powder	40-160W
Power Supply	110V/220V
Motor Drive	Pulse Servo Motor Drive
Film Covering Method	Constant temperature heating (Fully Automatic)
Taking up System	Automatic Sensor Feeding + Tensor Feeding + + Tensor Feeding +Super Large Smooth Cloth Stick
RIP software	Maintop
N.W	55 KG
G.W	70 KG
Machine size	1000mm*450mm*390mm
Packing size	1070mm*520mm*500mm

Printer Details



Integrated adsorption platform



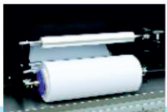
Ink stack Lifting system



Upper silver guide rail



UV Cooling lamp



Coil feeder



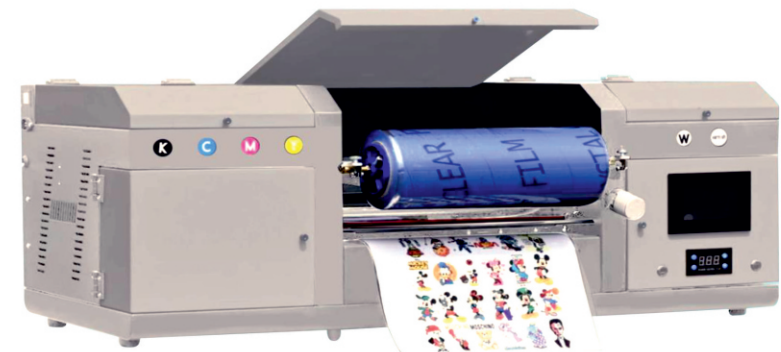
Film Covered heating system



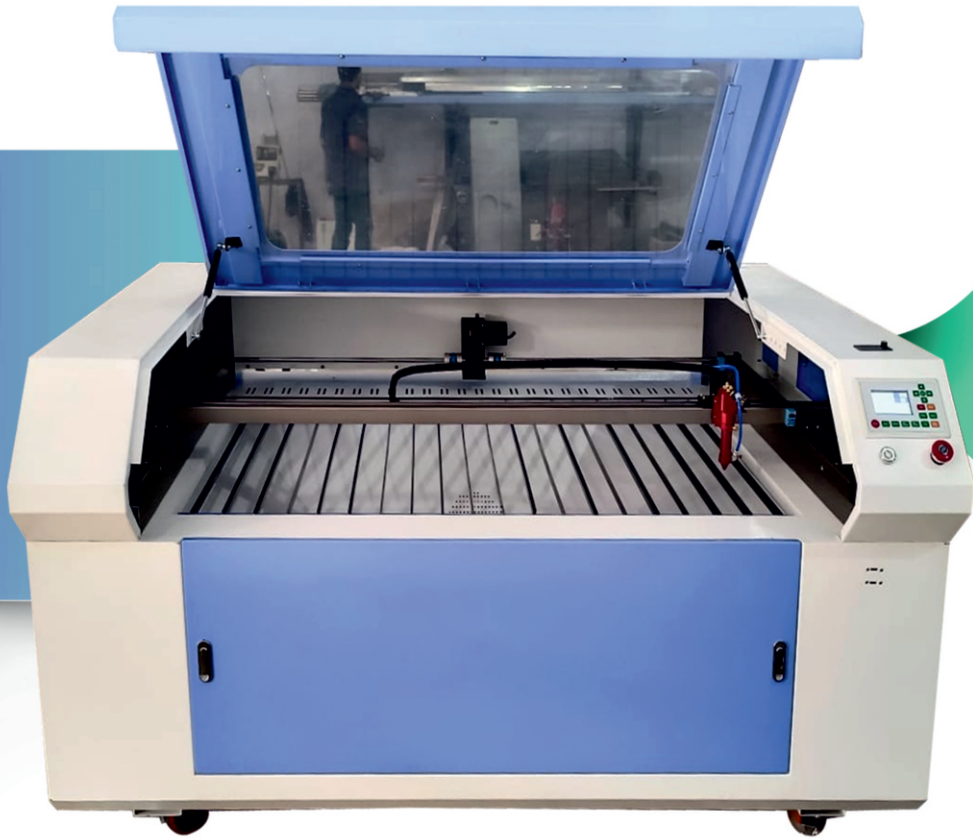
Primary cartridge



Chinese and English control panel



JOVI TECHNOLOGIES



CO2 4X3 LASER ENGRAVING AND CUTTING MACHINE

CO2 4x3 LASER ENGRAVING AND CUTTING MACHINE

- Model no. 1300x900
- 100w laser tube
- Water chiller - CW5000
- Blower 550w
- Air blower 135w
- RD controller 6442S
- Max. cutting speed 100mm/sec.
- Max. Engraving speed 800mm/ sec.
- 15mm acrylic cutting thickness
- Cutting format AutoCAD, Coral draw





UV PRINT CATALOGUE



JOVI
TECHNOLOGIES



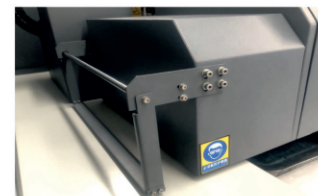
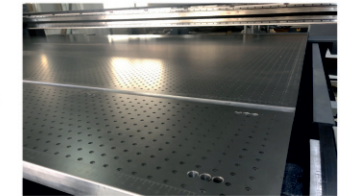
YC3321R| YC2513R

Main Features:

- Japanese imported print head for industrial production
- CMYK W LC LM and varnish optional for glossy surface
- Adopting high quality rubber roller for quantitative production
- Hard anodized vacuuming platform to avoid damaging the platform by rigid materials
- Magnetic transmission for X axis optional
- Imported metal encoder strip for high resolution optional
- Automatic anti-static design to avoid dust ink drops flying optional
- Sheet materials and Coiled materials can be printed in one machine



Product Model	YC3321R	YC2513R	
Printhead Type	RICOHGEN5/GEN6 /SEIKO1024GS		
Printhead Number	2-8 units		
Ink Characteristics	UVCuringInk(VOA Free)		
Lamp	UVLEDlamp		
Printhead Arrangement	CM YKLC LMW varnishoptional		
Guide Rail	TAIWANHIWIN		
Working Table	Anodized aluminum with 6-section vacuum sucking		
Printing Size	3300*2100mm	2500*1300mm	
Roll Material PrintWidth	3300mm	2500mm	
Roll Material Diameter	within 200mm		
Print Interface	USB2.0		
Media Thickness	0-100mm, higher can be customized		
Print Resolution & Speed	720X600dpi	4PASS	15-33sqm/h
	720X900dpi	6PASS	10-22sqm/h
	720X1200dpi	8PASS	8-18sqm/h
RIP Software	Photoprint Ntek Edition		
Media	Glass, Ceramic, Wood, Acrylic, Metal, Flexbanner, Carsticker, Wallpaper, meshpaper, etc		
Machine Dimension	5370*3780*1460mm	4570*2980*1460mm	
Weight	3500kg	2800kg	
Safety Certification	CE Certificate		



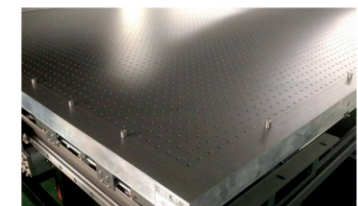
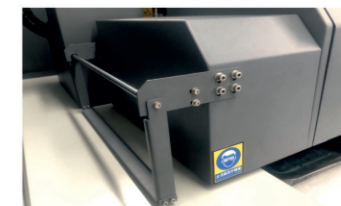
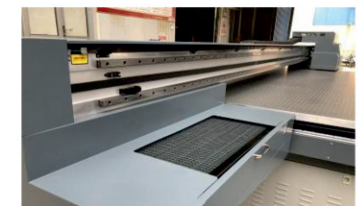
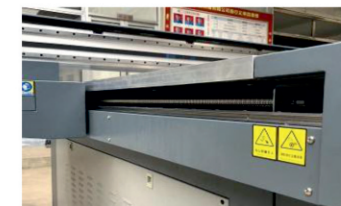
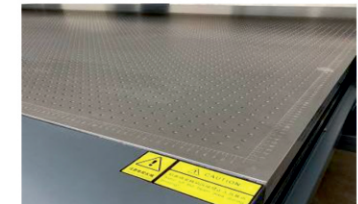
YC2513L | YC2030L | YC3321L

Main Features:

- Equipped with imported industrial printhead for high speed
- CMYK W LC LM and varnish optional for high quality printing
- Hard anodized vacuum platform to avoid rigid material damaging
- Magnetic transmission for X axis optional
- Imported metal encoder strip for high resolution optional
- Anti-Static design to avoid dust ink drops flying optional
- Advanced printhead anti-crash system to avoid the risk of a collision
- Can print on Glass, Ceramic Tiles, PVC, Acrylic, Wood, Metal, etc .



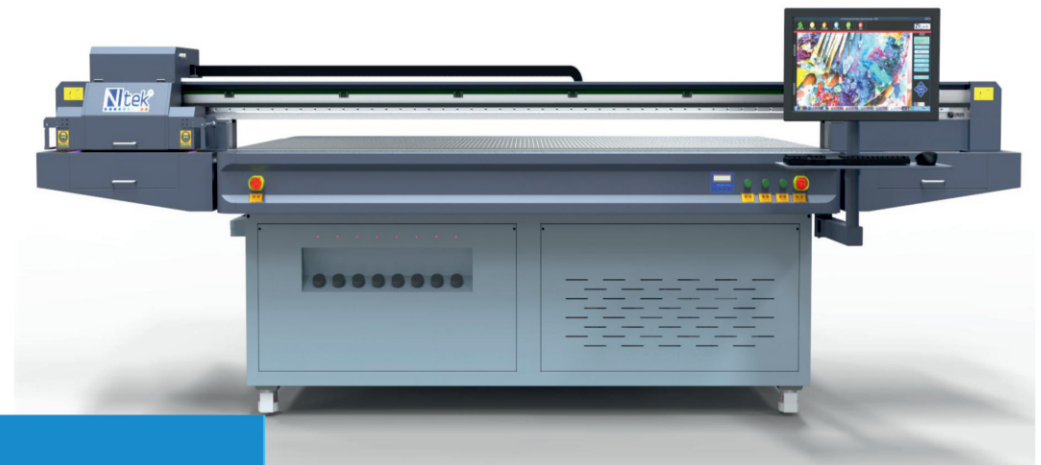
Product Model	YC2513L	YC2030L	YC3321L
Printhead Type	RICOHGEN5/GEN6 / SEIKO1024GS		
Printhead Number	2-8 units		
Ink Characteristics	UVCuringInk (VOA Free)		
Lamp	UVLED lamp		
Printhead Arrangement	CM YK LMW varnish optional		
Guide Rail	TAIWANHIWIN		
Working Table	Anodized aluminum with 6-section vacuum sucking		
Printing Size	2500*1300mm	2000*3000mm	3300*2100mm
Print Interface	USB2.0		
Media Thickness	0-100mm, higher can be customized		
Print Resolution & Speed	720X600dpi	4PASS	15-33sqm/h
	720X900dpi	6PASS	10-22sqm/h
	720X1200dpi	8PASS	8-18sqm/h
RIP Software	Photoprint Ntek Edition		
Media	Glass, Ceramic, Wood, Acrylic, Metal, Canvas, Leather, PP etc		
Machine Dimension	4400*2100*1400mm	4300*4070*1500mm	5300*4100*1650mm
Weight	1500kg	1900kg	500kg 2
Safety Certification	C E Certificate		



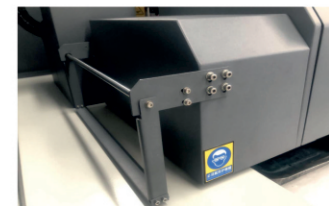
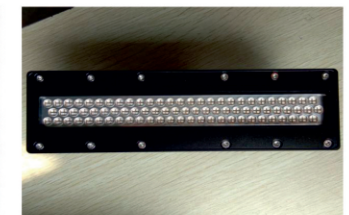
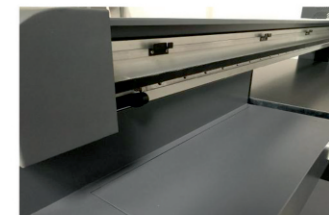
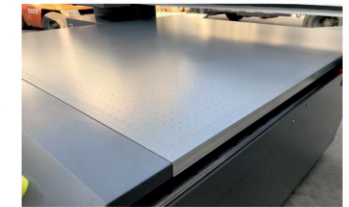
YC2513N

Main Features:

- Equiped with imported industrial printhead for high speed
- CMYK W printing for high resolution high quality printing
- Use non-VOC environmental UV curing ink, waterproof, wear-resistant
- Can print with 3D Embossing effects with outdoor life over 3 years
- Aluminum vacuum platform to avoid rigid material damaging
- Anti-Static design to avoid dust ink drops flying optional
- Advanced printhead anti-crash system to avoid the risk of a collision
- Can print on Glass, Ceramic Tiles, PVC, Acrylic, Wood, Metal, etc .



Product Model	YC2513N		
Printhead Type	RICOH GEN5		
Printhead Number	2-3 units		
Ink Characteristics	UVCuringInk (VOA Free)		
Lamp	UVLED lamp		
Printhead Arrangement	CM YKW		
Guide Rail	TAIWANHIWIN		
Working Table	Anodized aluminum with 6-section vacuum sucking		
Printing Size	2500*1300mm		
PrintInterface	USB2.0		
MediaThickness	0-100mm, higher canbe customized		
Print Resolution & Speed	720X600dpi	4PASS	15-33sqm/h
	720X900dpi	6PASS	10-22sqm/h
	720X1200dpi	8PASS	8-18sqm/h
RIP Software	PhotoprintNtek Edition		
Media	Glass,Ceramic,Wood,Acrylic,Metal, Canvas, Leather, PP etc		
Machine Dimension	4100*2080*1400mm		
Weight	1000kg		
Safety Certification	C E Certificate		



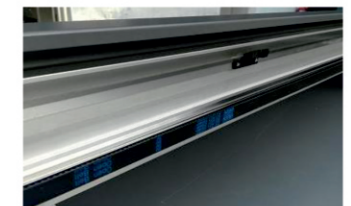
YC1313H | YC2513H

Main Features:

- Equiped with Japanese imported head for industrial production
- Best Quality control boards for stability & performance
- Use non-VOC environmental UV curing ink, waterproof, wear-resistant
- Can print with 3D Embossing effects with outdoor life over 3 years
- CMYK white and varnish optional for glossy surface and high quality printing
- 3.5 Picoliter head nozzle provides a high-resolution printing
- Double LED UV lamps with Water Cooling
- Vacuum Bed to hold the flexible media like Leather, foam board, etc.
- Applications in decoration and signage industry, can print on Glass, Ceramic Tiles, PVC, Acrylic Leather, Plastic, Wood, Metal, etc .



Product Model	YC1313H	YC2513H
Printhead Type	EPSON DX5/DX7/XP600/TX800/RICOH GH2220/TOSHIBACE4	
Printhead Number	2-8 units	
Ink Characteristics	UVCuring Ink (VO A Free)	
Lamp	UVLED lamp	
Printhead Arrangement	CM YKW varnish optional	
Guide Rail	TAIWANHIWIN	
Working Table	Aluminum Vacuum Sucking	
Printing Size	1300*1300mm	2500*1300mm
Print Interface	USB2.0	
Media Thickness	0-100mm, higher canbe customized	
Print Resolution & Speed	720X720dpi	4PASS 4-16sqm/h
	720X1080dpi	6PASS 3-11sqm/h
	720X1440dpi	8PASS 2-8sqm/h
RIP Software	UltraPrint/ RIP Print/Photoprint/Union Fancyoptional (Ntek Edition)	
Media	Glass, Ceramic,Wood,Acrylic, Metal,Canvas, Leather,PP, bottles, etc	
Machine Dimension	1060*2100*1160mm	3700*2080*1260mm
Weight	600kg	800kg
Safety Certification	C E Certificate	



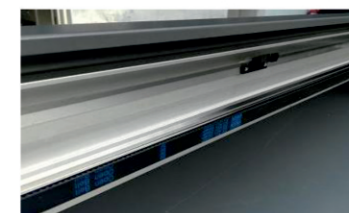
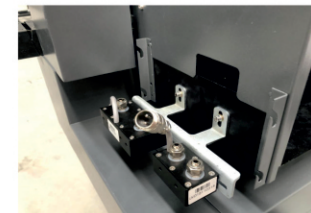
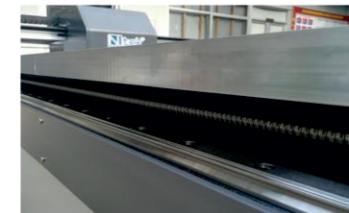
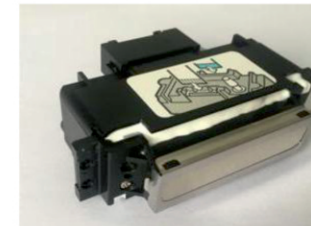
YC1016

Main Features:

- Japanese imported head for industrial production
- CMYK White and varnish optional for glossy surface and high quality printing
- Upgraded negative pressure system to ensure high accuracy 0.01kp difference for high quality printing performance
- Fast fiber transmission technology
- Aluminum vacuum suction platform for easy operation
- Long-lasting UV LED lamps are safe, energy efficient
- Applications in decoration and signage industry, can print on Glass, Ceramic Tiles, PVC, Acrylic Leather, Plastic, Wood, Metal, etc .



Product Model	YC1016		
Printhead Type	RICOHG2220/GEN5/GEN6/EPSON DX5/DX7/TOSHIBA CE4		
Printhead Number	2-8 units		
Ink Characteristics	UVCuring Ink (VOA Free)		
Lamp	UVLED lamp		
Printhead Arrangement	CM Y K W varnish optional		
Guide Rail	TAIWANHIWIN		
Working Table	Aluminum Vacuum Sucking		
Printing Size	1000*1600mm		
Print Interface	USB2.0		
Media Thickness	0-100mm, higher canbecustomized		
Print Resolution & Speed	720X720dpi	4PASS	4-16sqm/h
	720X1080dpi	6PASS	3-11sqm/h
	720X1440dpi	8PASS	2-8sqm/h
RIP Software	UltraPrint/ RIP Print/Photoprint/Union Fancy optional (Ntek Edition)		
Media	Glass,Ceramic,Wood, Acrylic, Metal, Canvas,Leather, PP etc		
Machine Dimension	2380* 2100* 1230mm		
Weight	500kg		
Safety Certification	CECertificate		

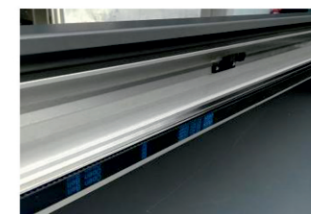
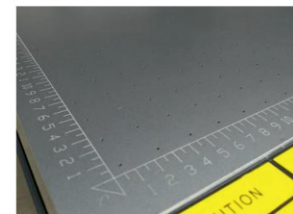


YC6090

Main Features:

- Equiped with Japanese imported head for industrial production
- Can print 3D Embossing effects with outdoor life over 3 years
- CMYK white and varnish optional for glossy surface and high quality printing
- With white ink stir function and ink level alarm function
- Water circulating cooling system for UV LED lamps
- Taiwan HIWIN guide rail for stable working
- 900mm WIDTH is much faster than 600mm width printer
- Can print flat materials or cylindrical objects, such as pen, bottle and cup, etc

Product Model	YC6090		
Printhead Type	EPSON DX5/DX7/XP600/TX800/RICOH GH2220/TOSHIBACE4		
Printhead Number	2-8 units		
Ink Characteristics	UVCuring Ink (VOA Free)		
Lamp	UVLED lamp		
PrintheadArrangement	CM Y KW varnish optional		
Guide Rail	TAIWANHIWIN		
Working Table	Aluminum Vacuum Sucking		
Printing Size	600*900mm		
Print Interface	USB2.0		
Media Thickness	0-100mm, higher canbe customized		
Print Resolution & Speed	720X720dpi	4PASS	4-16sqm/h
	720X1080dpi	6PASS	3-11sqm/h
	720X1440dpi	8PASS	2-8sqm/h
RIP Software	UltraPrint/ RIP Print/Photoprint/Union Fancyoptional (Ntek Edition)		
Media	Glass,Ceramic,Wood, Acrylic,Metal,Canvas,Leather,PP,bottles, cups etc		
Machine Dimension	1.06*2.1*1.16m		
Packing Dimension	2435*1220*1340m		
Weight	400kg		
Safety Certification	CE Certificate		



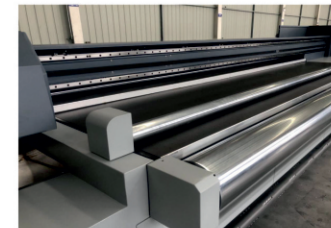
YC3200HR | YC2500HR

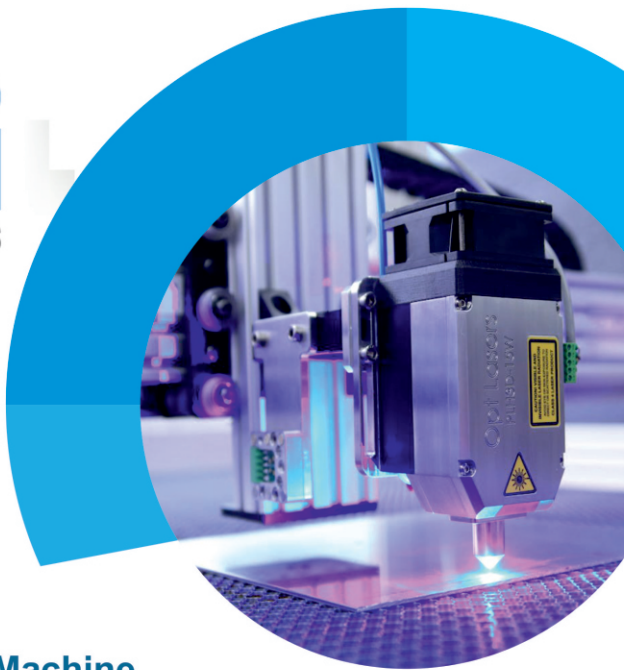
Main Features:

- Japanese imported head for industrial production
- CMYK W LC LM and varnish optional for high quality printing
- With 2-8 heads, 15sqm/hr-30sqm/hr for production printing
- Anti-Static design to avoid dust ink drops flying optional
- Advanced printhead anti-crash system to avoid the risk of a collision between printer carriage and material
- All steel intergrated body structure are much solid, will not deformed during long term working
- Can print on wallpaper, vinyl, mesh paper, tapaulin, backlit, g lass, ceramic tiles, PVC, acrylic, wood, metal, etc



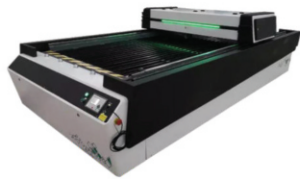
Product Model	YC3200HR	YC 2500HR	
Printhead Type	RICOH GEN5/GEN6/SEIKO1024GS		
Printhead Number	2-8 units		
Ink Characteristics	UVCuring Ink(VOA Free)		
Lamp	UVLED lamp		
Printhead Arrangement	C M Y K L C L M W varnish optional		
Guide Rail	TAIWANHIWIN		
Working Table	Anodized aluminum with 4-section vacuum sucking		
Printing Width	3200mm	2500mm	
Coiled Media Diameter	200mm		
Print Interface	USB2.0		
MediaThickness	0-100mm, higher canbe customized		
Print Resolution & Speed	720X600dpi	4PASS	15-33sqm/h
	720X900dpi	6PASS	10-22sqm/h
	720X1200dpi	8PASS	8-18sqm/h
RIP Software	Photoprint Ntek Edition		
Media	Wallpaper, mesh paper, vinyl, fabric, Glass,Ceramic, Wood,Acrylic, Canvas,etc		
Machine Dimension	5610*1720*1520mm	4770*1690*1440mm	
Weight	3000kg	2500kg	
Safety Certification	CE Certificate		





CO2 LASER MACHINE

CO2 Laser Machine



SAMPLES

Model	JT EC 3.2	JT EC 6.4 Desktop	JT EC 9.6	JT EC 13.9P	JT EC 13.25
-------	-----------	----------------------	-----------	-------------	-------------

Laser Tube	Water Cooling Sealed Glass Co2 Laser Tube				
Laser Power	40W	60/80W Desktop	80/100W	100W/130W	100/130W
Working Size	300mm x 200m	600mm x 400mm	900mm x 600mm	1300mm x 900mm	1300mm x 2500mm
File Suppot	BPM, JPG, CDR, DW, GDXF, ZIP, DDF, PLT, AL				
Chiller	Water Pump	Chiller Cw3000	Chiller Cw5000	Chiller Cw5200	Chiller Cw5200

CO2 Laser Consumables



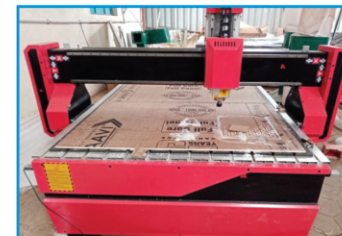
- | Reci Laser Tube 80W,100W
- | Power Supply Unit 60W,80W,100W,150W
- | Focus Lens
- | Exhaust Blower
- | EFR Laser Tube 60W,80W,100W,130W
- | Mirror Lens

CO2 Galvo Machine - Laser Marker



Samples

Outpur Power	30W (50W , 100W)
Frequency & Duty Cycle	0~25KHz, 0100% DC
Beam Diameter	1.8 ± 0.2mm
Max. Engraving Speed	1-60000 mm/min
Up/down Size	300 mm
Graphic File Format	DST, PLT, BMP, DXF
Cooling Way	Air Cooled
Operating Temperature	0-45 C
Supply Voltage	AC110-220V ± 10%, 50-60Hz
Power Consumption	< 575
Life	< 20000 Hour



CNC Router

Model	13.25	15.30
Working Size	1300 x 2500 mm	1500 x 3000 mm
Motor	Stepper motor & Driver	Servo motor
Spindle Power	3.5 KW	7.5 KW
Z-Axis	300 mm	400 mm
Working Voltage	AC 220V, 50h/60Hz	AC 380V, 50h/60Hz

CNC WOOD ROUTER



Name	Specification
Lathe Bed	Welded
XYZ GUIDE RAIL	Square Rail
X Y TRANSMISSION	Rack Gears
Z TRANSMISSION	Ball Screw
Spindle Motor	HQD 3 .7KW (air-cooling)
Inverter	3.7 KW Best
Operation System	NK105-G2
Typeset Software	ARTCAM-copy (English)
Motor & Driver	Step motor & leadshine drivers
Blades	One set of woodworking blades
Table	PVC with clamps
Dust collector	3KW with 2 bags
Table Size	1460*2900(mm)
Working Travel(XYZ)	1300*2500*200(mm) G.W. 980KGS
Packing Size(L*W*H)	3200*1980*1187(mm)
Packing: Wooden Case	

Standard Packing List

Name	
1	Machine RJ1325
2	Vaccum Pump
3	Tool Box
4	Handbook
5	Software ARTCAM-copy (English)
6	Control Box

Tool Box including the following parts:

*Cutter holder	2pcs
*Power line	1 pc
*Banners	2pcs

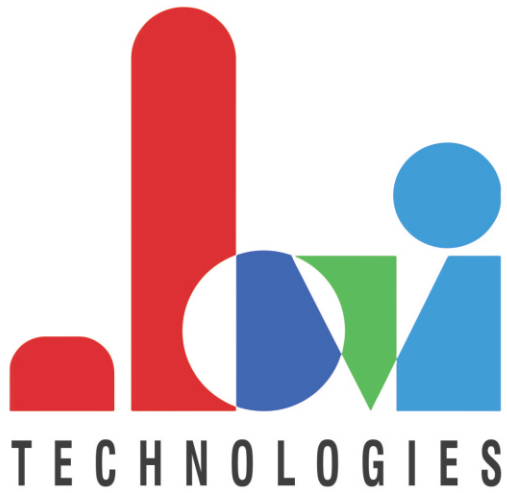
80%* BANK LOAN AVAILABLE * GSTIN Mandatory (or) 3 years IT Return

FREE Installation & Training

www.uvprintingmachines.in

www.flexmachines.in

Powered with
DAZZ 3D



3D

www.machineries.jovitech.in 
www.flexmachines.in 

Printer Series

Parameters

	L120 Basic 3D Printer	L120 Pro 3D Printer
Technology Type	LCD (MSLA)	LCD (MSLA)
Overall Size	221*175*403mm	285*247*465mm
Build Volume (X,Y, Z)	120*68*150mm	120*68*150mm
XY Resolution	47μ m	47μ m
Z Resolution	10μ m	10μ m
Layer Thickness	0.025mm, 0.035mm, 0.05mm, 0.1mm	0.025mm, 0.035mm, 0.05mm, 0.1mm
Minimum Hole Diameter	0.3mm	0.3mm
Minimum Wall Thickness	0.2mm	0.2mm
Printing Speed	12-36mm/hr	12-36mm/hr
Net Weight	6.5kg	12.5kg
Pattern Generation	2K LCD panel (2560*1440 Pixel)	2K LCD panel (2560*1440Pixel)
Light Source	48W, 405nm, Purple LED	48W, 405nm, Purple LED
Resin Tank (Resin Vat)	FEP release film, aluminium alloy frame	FEP release film, aluminium alloy frame
Supports	Automatic and manual supports generation	Automatic and manual supports generation
Input File	STL. /OBJ. /SLC. /DDEB. /DDWP	STL. /OBJ. /SLC. /DDEB. /DDWP
Connectivity	Wifi/ Ethernet/ USB	Wifi/ Ethernet/ USB
Offline Print Capability	Yes	Yes
Z-Axis Slide	High-precision dual Z-Axis slides	High-precision dual Z-Axis slides
Resins	Dazz 3D resins, 3rd party resins compatible	Dazz 3D resins, 3rd party resins compatible
Software	DDStarter	DDStarter
Systems Requirement	Windows, Mac	Windows, Mac
Touch Screen	No	7 Inches full-color touch screen, 90° rotatable
Power	Input: 100-240V 50-60Hz 2.5A Output: 24V DC 4A	Input: 100-240V 50-60Hz 2.5A Output: 24V DC 4A
Resin Fill System	NO	Automated resin fill system (Easily replaceable)
Air-purification System	NO	Yes
Sliding Peel Process with wipe	NO	Yes



JOVI TECHNOLOGIES

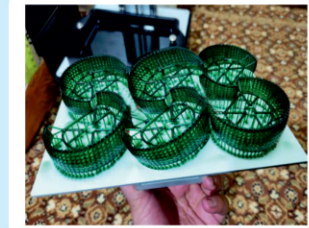
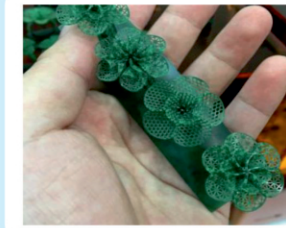
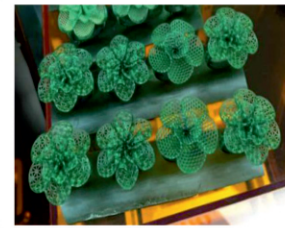
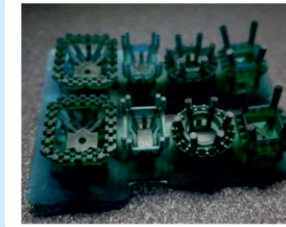
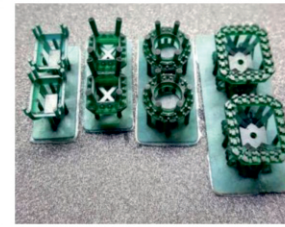
L120 Series 3D Printer for dental Lab and Dental Clinic



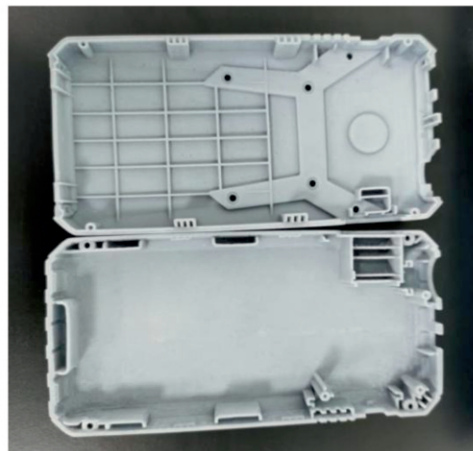
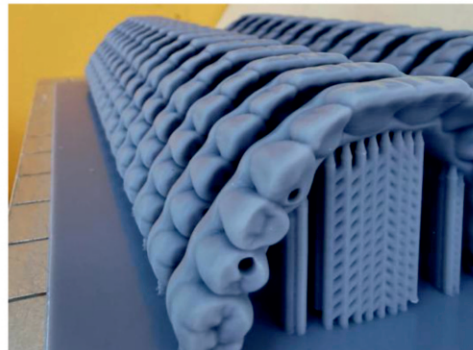
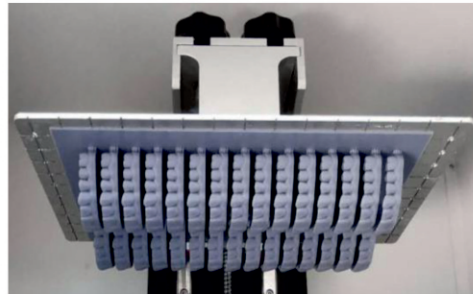
L120 Basic 3D Printer



L120 Pro 3D Printer



Dazzle L300 3D Printer Parameters



Printer Overall Size	567(L)*439(W)*702(H) mm
Build Volume (Print Size)	293(L)*165(W)*300(H) mm
Printing Speed	12-36mm/hr, adjustable
Net Weight	45kg
Technology Type	LCD (MSLA) Stereolithography
Light Source	405nm, 260 Watt, parallel uniform UV LED light
Resolution	4K (3840*2160 pixels) LCD panel
Layer Thickness	0.025 / 0.035 / 0.05 / 0.1 mm
Precision	Z Axis: 10 microns , XY Axis: 76 microns
Z-Axis Slide	High-precision dual Z-Axis slides
Input Format	.STL/.OBJ/.SLC/.DDEP/ .DDWP
Cooling System	Streamlined water cooling system+Air cooling system
Resin Fill System	Automated resin fill system (Easily replaceable)
Air-purification System	Automated air-purification system
Connectivity	USB / Ethernet & multi-user uplink for Wi-Fi
Screen	Smart 7 inches full-color touch screen, 90° rotatable
Software	DDStarter. One Software control multiple printers Easy to manage mass production
Systems Requirement	Windows, Mac
Supports	Automatic and manual supports generation (optional)
Resin	Dazzle resin, compatible with 3 rd party resin.
Input Power	100-240V, 50-60Hz , 2A
Warranty	One year warranty, lifetime free technical support consult

Dazzle L140 3D Printer Parameter

Technology Type	LCD(MSLA)
Overall Size	285(L)*247(W)*465(H)mm
Net Weight	12kg
Build Volume (X,Y,Z)	140(L)*78(W)*150(H)mm(printing size is increased by 33.8%)
(X,Y,Z) Resolution	XY 54um, Z10um
Minimum Hole Diameter	0.3mm/0.2mm
Z-Axis Slide	High-precision dual Z-Axis slides
Printing Speed	12-48mm/hr
Light Source	48W, 405nm, Purple LED
Resin Tank	FEP Film, High-performance aluminum alloy frame
Platform	High-performance aluminum alloy, fixed and leveled by multiple screws, and quick-release forming platform
Supports	Automatic and manual supports generation
Resins	Dazz 3D resins, 3rd party resins compatible
Software	DD Starter
Input File	.STL/.OBJ/.SLC/.DDEB/.DDWP
Connectivity	USB & multi-user uplink for Wi-Fi
Systems Requirement	Windows, Mac
Power	Input: 100-240V 50-60Hz 2.5A
	Output: 24V DC 4A
Layer Thickness	0.025mm, 0.035mm, 0.05mm, 0.1mm
Pattern Generation	2K LCD panel (2560*1440 Pixel)
Touch Screen	7 Inches full-color touch screen, 90° rotatable
Resin Fill System	Automated resin fill system (Easily replaceable)
Air-purification System	Yes

Product Introduce

- Product Name: L140-3DPrinter
- Product Model: L140

Advantage

- Larger build volume, greater freedom
- High printing accuracy and perfect molting details
- A complete range of printing materials and superior performance
- Autonomous software, user-friendly operation

Application

- Jewelry Industrial Design
- Education Anime Design
- Dental

Work Shows



Dazzle L140 3D Printer Parameter

L140 sort (62 rings)

L120 sort (44 rings)

Dazzle D100 3D Printer Parameter

Printer Size	Φ360*760mm
Build Volume	96*54*150mm
Light Source	Texas Instruments® industrial grade UV light engine
Wave Length	405nm
Light Source Resolution	1920*1080 pixels
Layer Thickness	0.025 / 0.035 / 0.05 / 0.1 mm
Z-Axis Precision	25 micron
Input Format	.STL/.OBJ/.SLC/.DAZZLE
Connectivity	USB & multi-user uplink for Wi-Fi
Screen	Smart screen-touch system
Net Weight	22 KGS
Input Power	100-240V, 50-60Hz , 2A
Warranty	1 year, lifetime technical support

- Industrial grade UV light engine, lifespan 20000 hours.
- Patented Software , Automatic supports Generation.
- Wireless LAN connection enables the equipment be controlled remotely
- Users could control multiple devices remotely through software and realize quantitative centralized management.
- Dimensions compensation and fine tuning function bring ultra high precision printing.
- Intelligent printing design achieves one-click printing without set first.



----Industrial grade UV light engine ensures stable and uniform illumination light source.



----The D100 is a perfect choice for producing real high accuracy models, and ensures outstanding surface finish.



----High quality output in the shortest time.
Layer: 0.025/0.035/0.05/0.1mm
Speed: 8-33mm/hr, adjustable

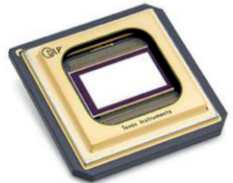


----With double-guide rail design, the forming platform runs more smoothly.



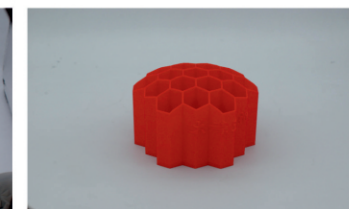
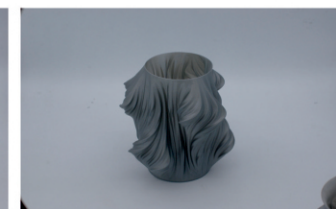
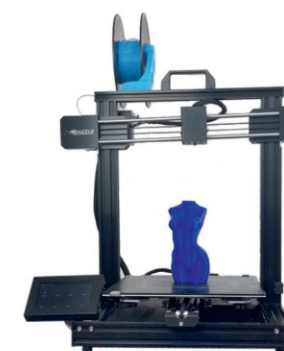
----No need for calibration on printing platform. Matt surface makes taking printed model out more easily.

----Utilizes the most expensive customized DMD chip from Texas Instruments®



----All metal fuselage, excellent heat dissipation design ensures the equipment runs stably for long time.

F255 3D Printer Parameter



Technology Type	FDM
Printer Overall Size	485*455*518mm
Build Volume (Print Size)	255*255*255mm
Structure	Gantry type
Net Weight	9.8kg
Print Material	PLA/TPU/PETG/ABS/Carbon Fiber
Package	Carton
Appearance	Integrated appearance, compact structure
Layer Thickness	0.05-0.3mm
Diameter of Material	1.75mm
Diameter of Nozzle	0.4mm
Precision	0.05mm
Printing Speed	10-175mm/s
Temperature of Nozzle	≥280°C
Pre-heat temperature	≥100°C
Electronically Controlled Drive	German TRINAMIC Silent Driver
Motor QTY	5Pcs (Z 2Pcs, X 1Pcs, Y 1Pcs, Extruder 1Pcs)
XY-Axis slide	Precise slide rail, synchronous belt pretension structure
Z-Axis slide:	Use double motor to drive double screw
Z-Axis slide guide wheel	Double axle with 8 POM bearing regulating wheels
Z-Axis slid sensor	Dual-axis photoelectric position sensor
Display	4.3 inch full-color touch screen
Parts processing	High precision CNC molding and surface oxidation
Power Outage	Resume printing after outages
Broken wire detection	Broken wire status sensor
Print Platform	Lattice glass heating plate
Connectivity	USB/SD Card
Input File	.STL/.OBJ/.AMF/.G-Code
Slicing software	Cura/Simplify3D/Slic3r/Prprietier-Host
Accessory Tool	Spatula, 2 Hexagon Wrenches, A Roll of Printing Material
Power Supply	3C Power 110/230V
Power	350W



JOVI TECHNOLOGIES

 SF.No - 425/1, Irugur Link Road, L&T Bypass,
Irugur, Coimbatore- 641 103, Tamilnadu.

 info@jovitech.in

 www.uvprintingmachines.in
www.flexmachines.in

 **+91 97904 00555 - 6381 531 289**



Scan here for
for more details

80%*

**BANK LOAN
AVAILABLE**

*** GSTIN Mandatory (or)
3 years IT Return**

**FREE Installation
& Training**